



Quick Start Guide

Step 1 HAVA Setup

1 Unpack: Check that your package includes the following.



Hava Unit



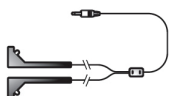
2 Composite Cables



Network Cable



Power Supply



IR Blaster Cable



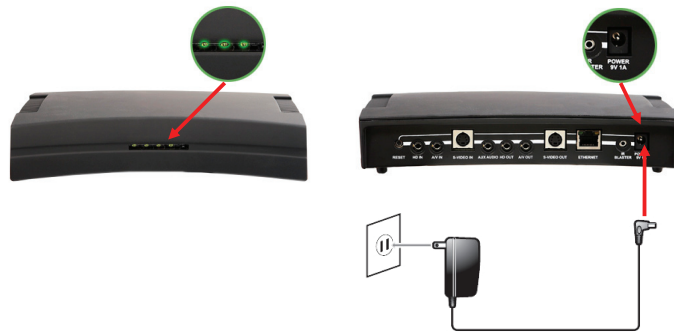
Hava Software



2 Component Cables (HAVA Platinum only)

2 TESTING YOUR POWER SUPPLY:

Connect the power supply cord to the back of your Hava unit and the power adapter to a power source. Take note that the power LED illuminates.



Step 2 Connect to your Video signal

1 COMPOSITE CABLE CONNECTION:

Use the included Composite Cable to connect one end from the available outputs on your Cable/Satellite box to the inputs labeled A/V In on your HAVA.



Composite Cable



CABLE SET-TOP / SATELLITE / DVR BOX



Hava



Device

Yellow = Video
Red = Audio Right
White = Audio Left

2 COMPONENT CABLE CONNECTION (HAVA Platinum only):

Use the Component Cable (not included) to connect one end from the available Y, Pb, Pr outputs on your Cable/Satellite box to the HD input on your HAVA. For audio use the composite connection (Step 2.1), but don't connect the video input.



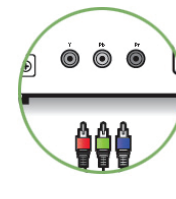
Component Cable (HAVA Platinum only)



CABLE SET-TOP / SATELLITE / DVR BOX

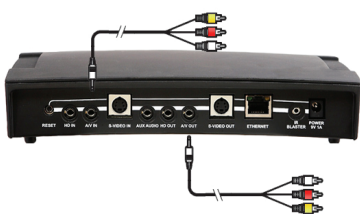


Hava



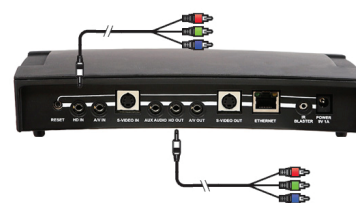
Device

Green = Y
Blue = Pb
Red = Pr



Pass-through Connection

A) IF YOU USE A SET-TOP BOX OR DVR FOR YOUR VIDEO INPUT, CHOOSE ONE OF THE THREE FOLLOWING (1-3) CONNECTION OPTIONS.
B) IF YOU DO NOT HAVE AN AVAILABLE OUTPUT ON YOUR SET-TOP BOX OR DVR, USE THE PASS-THROUGH CONNECTIONS AS ILLUSTRATED IN THE DIAGRAM ON THE RIGHT.
C) FOR HD VIDEO, CONNECT YOUR HP ENABLED SET-TOP BOX OR DVD PLAYER USING COMPONENT CABLE CONNECTION IN DIAGRAM 2



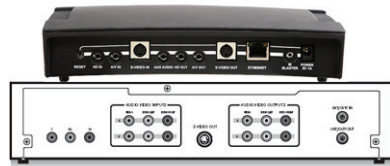
Pass-through Connection

3 S-VIDEO CONNECTION:

Use the included S-Video Cable to connect one end from the S-Video Out on your Cable/Satellite box to the S-Video Input on your HAVA. For audio use the composite connection (Step 2.1), but don't connect the video input.



S-Video Cable (not included)



CABLE SET-TOP / SATELLITE / DVR BOX



Hava



Device



Pass-through Connection

Step 3 Connect the Infrared (IR) Blaster Cable

! The IR blaster cable allows HAVA to send commands to your video device, just like a remote. Make sure you properly connect the IR blaster cable before you install the HAVA software so that the Setup Wizard can control your device.

1 CONNECTING TO YOUR HAVA

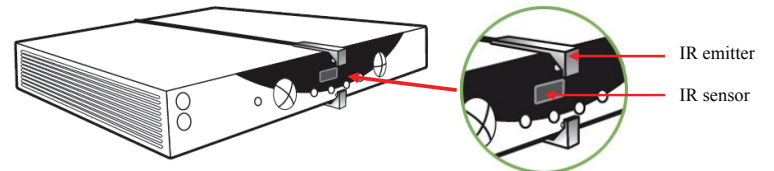
Connect the IR blaster cable to the IR blaster port on the back of your HAVA.



IR Blaster

2 COMPONENT CABLE CONNECTION:

Locate the IR receiver on the video device you wish to operate. Place the IR emitter so that it faces the IR sensor on the device (see diagram). Once you have tested the IR emitter using the Setup Wizard and can verify that it is placed properly on the video device, peel the sticker off and fix the emitter to the device.



Finding the infrared sensor

The IR sensor is on the front of your cable / satellite / DVR box. Often you can locate it by using your remote and seeing the flashing sensor light it activates.

Step 4 Connecting to the Network

CONNECTING HAVA TO YOUR HOME NETWORK:

HAVA can be connected to any high speed internet connection or broadband network via router. You can connect HAVA to your router using the provided network cable.



Network Cable



Router



HAVA

Connecting your AV devices

The following are a few of the many devices that can be connected to your HAVA:

- Cable Box, Satellite Box, HD Receiver
- TiVo or other DVR device
- Camera/Camcorder
- DVD



Step 5 INSTALLING THE HAVA SOFTWARE

INSTALL THE SOFTWARE:

Insert the supplied installation CD into your computer and run the Setup Wizard. Follow the on-screen steps to complete the setup process.

The HAVA Setup Wizard is designed to take you to the configuration process step-by-step. This includes set-up of your network setting, video/audio setting and your device settings.



Hava Software

Free software updates will be made available on the Snappy Multimedia website. Go to: http://www.snappymultimedia.com/support_downloads.htm

! MCE (Windows Media Center Edition) will need to run the MCE TV signal setup to operate MCE with HAVA.

Congratulations!

You have just completed the Quick Start Guide. Enjoy. For more advanced instructions or for troubleshooting, please consult the HAVA User Manual available on the installation CD.



If you need further assistance, after reading through the Quick Start Guide, please contact:

Customer Support
1(866)YES-HAVA, 1(866)937-4282
9am to 6pm (PST), Monday – Friday

www.snappymultimedia.com
www.monsoonmultimedia.com